

Opus

C-260 | C-360



Opus

Opus

Opus

www.johannus.com

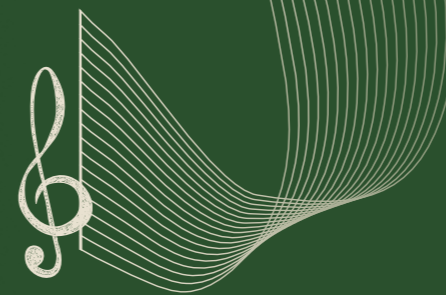
Opus

A MEMBER OF THE
Global Organ Group

JOHANNUS

Sound
of excellence

The familiar Opus for church or chapel



The Opus Choir is the familiar Opus, made suitable for accompanying smaller groups such as choirs or gatherings of up to 150 people. The organ is available in a two-manual and a three-manual version. Since the Opus Choir can be equipped with both internal and external speakers, it finds its way into any room. The authentic pipe organ sound of the

organ, combined with the singing of ensemble, choir or congregation, makes for a gorgeous combination. To ensure the very best sound, the instrument is voiced by a specialist to make best use of the acoustics of the room in which it is installed. As a result, the Opus Choir is and remains an inspiration for organist, conductor and congregation.

C-260



Endless variation with the style variable disposition

To do justice to each stop and each style, a disposition was chosen which links specific stops to a particular style. Some tab stops therefore have two stop names. For instance, in the historic style, the organist has the Terzian (Hinsz organ, Kampen) at his disposal, while a Cornet can be played in the romantic, baroque and symphonic styles using the same tab stop. In the baroque style, each manual has a full Principal choirs are completely present, making the plenum grand and radiant. The Flûte Harmonique and Violon 8' are included in the symphonic style. Thus, the Opus Choir ensures that the organist can vary endlessly and showcase the unique sounds of each different style.

Authentic pipe organ stops come to life

The Opus Choir features four sample styles: romantic, symphonic, baroque and historic. In each style, stops from specific pipe organs come to life. For example, the romantic sample bank features stops exclusively from the Vater-Müller organ of the Oude Kerk in Amsterdam. In the symphonic sample bank, the organist hears the sounds of Adema (Raalte) and Cavaillé-Coll (Paris). The historic sample bank breathes the Hinsz organ of the Bovenkerk in Kampen and the baroque sample bank consists solely of samples from the Silbermann organ from the Katholische Hofkirche in Dresden. Whatever music is being played or sung, this organ always sets the right tone and gives a true pipe organ experience.



Opus C-260

Opus C-360

A faithful companion

No limits for the organist

To accommodate all the registrations of those who play it, the Opus Choir has 125 memory banks with six memory slots each. This allows each organist to effortlessly store his different registrations and recall them at any time. In addition, the Opus Choir's two swell pedals are programmable: as an expression pedal (for one or both manuals), or as a general crescendo. This way, the organ can be adjusted to the taste of any organist.

A powerful 4.1 audio system to suit the room

All rooms are not created equal. That is why the Opus Choir is available in two versions: an 'external version' where the loudspeakers are placed in the room, and an 'internal version' where the loudspeakers and subwoofer are placed inside the organ. In both cases, the powerful 4.1 audio system ensures a beautiful distribution of sound, so that everyone feels surrounded by lifelike sound.

A reliable instrument

The Opus Choir has an important and central place in the room where it is placed. It is not only the organist who counts on the instrument, but everyone who is present like singers and listeners, for instance. Therefore, the Opus Choir uses stable, reliable technology that is guaranteed to do its job for years to come. As a result of its unrivalled quality, Johannus also offers confidence and security: in addition to our standard warranty (2 years), there is a 10-year warranty on all computer boards in the organ. So, we offer a reliable organ that guarantees years of playing pleasure.

C-360

Tailored to *accompany* choirs



De Opus **C-260**
*Perfect to
support singing*

With its two keyboards and 36 stops, the Opus C-260 is ideally suited to accompany singing. The subtle and elegant instrument is built exclusively for smaller rooms seating up to 150 people. The organ's authentic pipe organ sound will stir the entire room.



De Opus **C-360**
*More colour
for the choir*

With its three manuals and disposition of 43 stops, the Opus C-360 is a wonderful. The organ is specifically tailored to the singing choir, inspiring both singers and organist with pipe organ sound of the highest quality. The 4.1 audio system ensures that the sound blends harmoniously with the room.

A suitable reverb for every room

Some chapels have wonderful acoustics in which the sound of the organ can spread. However, this is not the case in every room. The Opus Choir is therefore equipped with a lifelike, advanced convolution reverb. Thanks to ingenious engineering by Johannus engineers, the organ reverb has as many as 48,000 reflections per second. The more reflections, the more detailed the sound reproduction. When a key is pressed, each individual tone is enriched with the selected reverb. The organ has a total of 12 recorded reverbs from as many different churches, varying in length and spectrum.

Reliable, lightning-fast technology

The Opus Choir is based on OranjeCore+ technology. This technology guarantees a fast start-up time: turn the organ on and it is immediately playable. Also, its excellent sound quality and long-term reliability contribute to the organist's confidence in the instrument. For the organist who likes to prepare with headphones, the Opus Choir offers an immersive stereo experience. The ambience function also allows the organist to choose from which position in the church the sound is experienced: from the organ bench, or from the front, centre or back of the church. In short, the Opus Choir guarantees stable technology, lots of possibilities and a beautiful sound.

Optimally suited for every space

A characteristic feature of Johannus church organs, is the unique way these instruments interact with the space they are in. Naturally, the organ will be voiced by a specialist in the room to get the best sound possible. In addition, the Opus Choir can also be matched to its surroundings in terms of design, as it is available in various colours. As standard, the instrument is equipped with a roll cover. Naturally, there are also various upgrade options, such as the choice between a straight, concave or RACO pedal, and a number of options to upgrade its keyboards.

**Opus
C-260 Intern / Extern**

Great		Swell		Pedal	
Bourdon	16'	Principal	8'	Principal	16'
Principal	8'	Flute	8'	Flute (S)	16'
Stopped Flute	8'	Rohr Flute (B-H)	8'	Subbass	16'
Quintaton	8'	Viola di Gamba	8'	Octavebass	8'
Harmonic Flute (S)	8'	Vox Celeste	8'	Gedackt	8'
Octave	4'	Octave	4'	Choralbass	4'
Open Flute	4'	Flute	4'	Flute (S)	4'
Twelfth	2 2/3'	Flute Twelfth	2 2/3'	Mixture	
Gamba (S)	8'	Wald Flute	2'	Quintbass (S-H)	
Fifteenth	2'	Fifteenth (B)	2'	Contra Trumpet	16'
Flute	2'	Larigot	1 1/3'	Trumpet	8'
Cornet		Siff flute (B-H)	1'	Clarion (S)	4'
Terzian (H)		Sesquialtera		Great - Pedal	
Mixture		Mixture		Swell - Pedal	
Trumpet	16'	Carillon (H)			
Trumpet	8'	Fagotto	16'		
Cromorne	8'	Trumpet	8'		
Tremulant		Oboe (S-B)	8'		
Swell - Great		Vox Humana	8'		
		Tremulant			

**Opus
C-360 Intern / Extern**

Great		Swell		Choir		Pedal	
Principal	16'	Bourdon	16'	Principal	8'	Principal	16'
Principal	8'	Principal	8'	Bourdon	8'	Flute (S)	16'
Stopped Flute	8'	Flute	8'	Octave	4'	Subbass	16'
Quintaton	8'	Rohr Flute (B-H)	8'	Salicional (S)	8'	Octavebass	8'
Harmonic Flute (S)	8'	Viola di Gamba	8'	Flute	4'	Gedackt	8'
Octave	4'	Vox Celeste	8'	Nazard	2 2/3'	Choralbass	4'
Open Flute	4'	Octave	4'	Flute	2'	Flute (S)	4'
Twelfth	2 2/3'	Flute	4'	Fifteenth (B)	2'	Mixture	
Gamba (S)	8'	Flute Twelfth	2 2/3'	Sesquialtera		Quintbass (S-H)	
Fifteenth	2'	Wald Flute	2'	Mixture		Contra Trumpet	16'
Cornet		Fifteenth (B)	2'	Larigot (S)	1 1/3'	Trumpet	8'
Terzian (H)		Tierce	1 3/5'	Cromorne	8'	Clarion (S)	4'
Mixture		Siff flute (B-H)	1'	Tremulant		Choir - Pedal	
Trumpet	16'	Mixture		Swell - Choir		Great - Pedal	
Trumpet	8'	Carillon (H)				Swell - Pedal	
Tremulant		Fagotto	16'				
Choir - Great		Trumpet	8'				
Swell - Great		Oboe (S-B)	8'				
		Vox Humana	8'				
		Tremulant					



Technical Specifications

Opus	C-260 Internal	C-260 External	C-360 Internal	C-360 External
Overview:				
System	OranjeCore+™	OranjeCore+™	OranjeCore+™	OranjeCore+™
Manuals	2	2	3	3
Voices	36	36	43	43
Solo stops	2	2	2	2
Couplers	3	3	6	6
Tremulants	2	2	3	3
Style-variable stoplist	•	•	•	•
Console:				
<i>Dimensions</i>				
Height (excluding music desk)	115 cm	115 cm	122 cm	122 cm
Height (including music desk)	139 cm	139 cm	146 cm	146 cm
Width	133 cm	133 cm	140 cm	140 cm
Depth (excluding pedal board)	63 cm	63 cm	74 cm	74 cm
Depth (including pedal board)	99 cm	99 cm	106 cm	106 cm
<i>Finish</i>				
Wood: Light oak	•	•	•	•
Wood: Other kind of wood or colour	optional	optional	optional	optional
<i>Music desk</i>				
Wooden desk	•	•	•	•
Plexiglas desk	optional	optional	optional	optional
Adjustable desk	optional	optional	optional	optional
Desk lighting	optional	optional	optional	optional
<i>Roll cover</i>				
Wooden roll cover with key lock	•	•	•	•
<i>Manuals</i>				
Synthetic keyboards (5 octaves)	•	•	•	•
Synthetic keyboards with wooden core	optional	optional	optional	optional
Wooden keyboards (ebony/oak) with wooden core	optional	optional	optional	optional
UHT wood handmade	optional	optional	optional	optional
<i>Swell shoes</i>				
Wooden swell shoes	2	2	2	2
<i>Toe Studs</i>				
Brass toe studs	optional	optional	optional	optional
<i>Pedalboard</i>				
30-note straight pedal board with plain sharps	•	•	•	•
30-note straight pedal board with black sharps	optional	optional	optional	optional
30-note concave pedal board with black sharps	optional	optional	optional	optional
30-note RACO pedal board with black sharps	optional	optional	optional	optional
Pedal lighting	optional	optional	optional	optional
<i>Bench</i>				
Bench	•	•	•	•
Bench with lift lid	optional	optional	optional	optional
Adjustable bench	optional	optional	optional	optional
<i>External connections</i>				
MIDI (IN, OUT)	•	•	•	•
Aux In	•	•	•	•
Aux Out	•	•	•	•
Headphones	•	•	•	•
Audio:				
Audio system	4.1	4.1	4.1	4.1
Audio control	DEA2.0™	DEA2.0™	DEA2.0™	DEA2.0™
<i>Reverb System</i>				

Opus	C-260 Internal	C-260 External	C-360 Internal	C-360 External
Convolution reverb, 12 unique reverbs				
•	•	•	•	•
<i>Output amplifiers</i>				
Full-range amplifiers (180 Watt)	-	4	-	4
Bass amplifier (350 Watt)	-	1	-	1
Full-range amplifiers (80 Watt)	4	-	4	-
Bass amplifier (170 Watt)	1	-	1	-
<i>Sound reproduction</i>				
External loudspeakers	-	2 x UL 2800	-	2 x UL 2800
Internal loudspeakers	8	-	8	-
External subwoofer	-	1 x UL 3300	-	1 x UL 3300
Internal subwoofer	1	-	1	2
Headphones / Aux Out	SSE2.0™	SSE2.0™	SSE2.0™	SSE2.0™
Functions:				
<i>Controllable functions</i>				
0 (recall/cancel)	•	•	•	•
MB (Manual Bass)	•	•	•	•
Menu (Johannus Menu)	•	•	•	•
RO (Reeds Off)	•	•	•	•
Trans. (Transposer)	•	•	•	•
Organ volume	•	•	•	•
Reverb volume	•	•	•	•
PL (Plenum)	•	•	•	•
<i>Intonations</i>				
Sample styles: Romantic, Symphonic, Baroque, Historic	•	•	•	•
<i>Setzer memory</i>				
Levels	125	125	125	125
Memory locations per level	6	6	6	6
Presets (PP-P-MF-F-FF-T-PL), programmable	•	•	•	•
<i>Johannus Menu Functions</i>				
Ambiance	•	•	•	•
Demo songs	6	6	6	6
Keyboard Transfer	-	-	•	•
Temperaments	11	11	11	11
Tuning (pitch)	•	•	•	•
Headphones / Aux	•	•	•	•
Bass / Brilliance	•	•	•	•
<i>Expression pedals</i>				
PEPC™ Programmable Expression Pedal Configuration	•	•	•	•
General Crescendo (through PEPC™)	•	•	•	•
<i>Miscellaneous</i>				
Dynamic bellows simulator	•	•	•	•
LiveTune™	•	•	•	•
Dynamic chiff	•	•	•	•
VPP™ (Virtual Pipe Positioning)	•	•	•	•
Headphone Equalizer	•	•	•	•
DEA2.0™	Digital Equalized Audio	All audio channels have a updated, advanced equalizer.		
SSE2.0™	Spatial Sound Experience	Special, updated and optimized, audio mix for headphone / aux-out. This gives the feeling that the organ is in front of you, while the reverberation also gives you the idea that you are in the room itself.		
VPP™	Virtual Pipe Positioning	Through this system it is possible to tell the organ where an organ pipe can be found.		
PEPC™	Programmable Expression Pedal Configuration	All expression pedals can be programmed as swell pedal or general crescendo.		

JOHANNUS

www.johannus.com

A MEMBER OF THE
Global Organ Group

Sound
of excellence