

Opus

C-280 | C-380



r

o

s

www.johannus.com

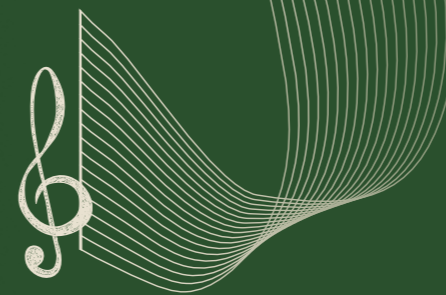
JOHANNUS

A MEMBER OF THE
Global Organ Group

JOHANNUS

Sound
of excellence

The *familiar* Opus for church or chapel



The Opus Choir is the familiar Opus, made suitable for accompanying smaller groups such as choirs or gatherings of up to 150 people. The organ is available in a two-manual and a three-manual version. Since the Opus Choir is equipped with external speakers, it finds its way into any room. The authentic pipe organ sound of the organ, combined with the singing of ensemble, choir or congregation, makes for a gorgeous combination.

C-280



Endless variation with the style variable disposition

To do justice to each stop and each style, a disposition was chosen which links specific stops to a particular style. Some tab stops therefore have two stop names. For instance, in the historic style, not only can the Terzian (Hinsz organ, Kampen) be played, but also a Cornet can be played in the romantic, baroque and symphonic styles using the same tab stop. In the baroque style, each manual has a full Principal choirs are completely present, making the plenum grand and radiant. The Flûte Harmonique and extra string stops like the Gamba 8' and Salicional 8' are included in the symphonic style. Thus, the Opus Choir ensures that the organist can vary endlessly and showcase the unique sounds of each different style.

Authentic pipe organ stops come to life

The Opus Choir features four sample styles: romantic, symphonic, baroque and historic. In each style, stops from specific pipe organs come to life. For example, the romantic sample bank features stops from the Ruffatti organ from the Church of the Epiphany in Miami. In the symphonic sample bank, the organist hears the sounds of Adema (Raalte) and Cavaillé-Coll (Paris). The historic sample bank breathes the Hinsz organ of the Bovenkerk in Kampen and the baroque sample bank consists solely of samples from the Silbermann organ from the Katholische Hofkirche in Dresden. Whatever music is being played or sung, this organ always sets the right tone and gives a true pipe organ experience.



Opus C-280



Opus C-380

A faithful companion

No limits for the organist

The piston system for the Opus Choir is comprehensive with 125 memory banks. Each individual memory bank allows the organist to set eight pistons for each division and to set eight general pistons. There is also great flexibility with the two Swell Pedals which are easily programmable within the menu and easily assigned for each division or as a general crescendo pedal. Using these advanced facilities, the organ can be easily adjusted to the taste of any organist.

Tailored to the smaller space

Our designers designed the Opus Choir with one specific purpose: to accompany singing in rooms seating up to 150 people. To ensure the very best sound, the instrument is voiced by a specialist to make best use of the acoustics of the room in which it is installed. The powerful

4.1 audio system ensures a beautiful distribution of sound, so that everyone feels surrounded by the lifelike sound. As a result, the Opus Choir is and remains an inspiration for organist, conductor and congregation.

A reliable instrument

The Opus Choir has an important and central place in the room where it is placed. It is not only the organist who counts on the instrument, but everyone who is present like singers and listeners, for instance. Therefore, the Opus Choir uses stable, reliable technology that is guaranteed to do its job for years to come. As a result of its unrivalled quality, Johannus also offers confidence and security: in addition to our standard warranty (2 years), there is a 10-year warranty on all computer boards in the organ. So, we offer a reliable organ that guarantees years of playing pleasure.

C-380

Tailored to *accompany* choirs



The Opus **C-280**
*Perfect to
support singing*

With its two keyboards and 36 stops, the Opus C-280 is ideally suited to accompany singing. The subtle and elegant instrument is built exclusively for smaller rooms seating up to 150 people. The organ's authentic pipe organ sound will stir the entire room.



The Opus **C-380**
*More colour
for the choir*

With its three manuals and disposition of 43 stops, the Opus C-380 is a wonderful instrument. The organ is specifically tailored to the singing choir, inspiring both singers and organist with pipe organ sound of the highest quality. The 4.1 audio system ensures that the sound blends harmoniously with the room.

A suitable reverb for every room

Some chapels have wonderful acoustics in which the sound of the organ can spread. However, this is not the case in every room. The Opus Choir is therefore equipped with a lifelike, advanced convolution reverb. Thanks to ingenious engineering by Johannus engineers, the organ reverb has as many as 48,000 reflections per second. The more reflections, the more detailed the sound reproduction. When a key is pressed, each individual tone is enriched with the selected reverb. The organ has a total of 12 recorded reverbs from as many different churches, varying in length and spectrum.

Reliable, lightning-fast technology

The Opus Choir is based on OranjeCore+ technology. This technology guarantees a fast start-up time: turn the organ on and it is immediately playable. Also, its excellent sound quality and long-term reliability contribute to the organist's confidence in the instrument. For the organist who likes to prepare with headphones, the Opus Choir offers an immersive stereo experience. The ambience function also allows the organist to choose from which position in the church the sound is experienced: from the organ bench, or from the front, centre or back of the church. In short, the Opus Choir guarantees stable technology, lots of possibilities and a beautiful sound.

Optimally suited for every space

A characteristic feature of Johannus church organs, is the unique way these instruments interact with the space they are in. Naturally, the organ will be voiced by a specialist in the room to get the best sound possible. In addition, the Opus Choir can also be matched to its surroundings in terms of design, as it is available in various colours. As standard, the instrument is equipped with a roll cover. Naturally, there are a number of purchase options such as upgrading the organ keyboards.

Opus
C-280

Great		Swell		Pedal	
Bourdon	16'	Principal	8'	Principal	16'
Principal	8'	Rohr Flute	8'	Flute (S)	16'
Stopped Flute	8'	Cor de Nuit (S)	8'	Subbass	16'
Harmonic Flute	8'	Viola di Gamba	8'	Octavebass	8'
Quintaton (B-H)	8'	Vox Celeste	8'	Gedackt	8'
Octave	4'	Octave	4'	Flute	4'
Open Flute	4'	Flute	4'	Choralbass (B-H)	4'
Twelfth	2 2/3'	Flute Twelfth	2 2/3'	Mixture	
Gamba (S)	8'	Wald Flute	2'	Quintbass (S-H)	
Fifteenth	2'	Fifteenth (B)	2'	Contra Trumpet	16'
Cornet		Tierce	1 3/5'	Trumpet	8'
Terzian (H)		Sesquialtera (S-H)		Clarion (S)	4'
Mixture		Larigot	1 1/3'	Great - Pedal	
Trumpet	16'	Siffute (B-H)	1'	Swell - Pedal	
Trumpet	8'	Mixture			
Cromorne	8'	Carillon (H)			
Tremulant		Fagotto	16'		
Chamade		Oboe	8'		
Swell - Great		Trumpet (H)	8'		
		Vox Humana	8'		
		Tremulant			

Opus
C-380

Great		Swell		Choir		Pedal	
Spitzflöte	16'	Bourdon	16'	Principal	8'	Principal	16'
Principal (S-B-H)	16'	Principal	8'	Bourdon	8'	Flute (S)	16'
Principal	8'	Rohr Flute	8'	Octave	4'	Subbass	16'
Stopped Flute	8'	Cor de Nuit (S)	8'	Salicional (S)	8'	Octavebass	8'
Harmonic Flute	8'	Viola di Gamba	8'	Flute	4'	Gedackt	8'
Quintaton (B-H)	8'	Vox Celeste	8'	Nazard	2 2/3'	Flute	4'
Octave	4'	Octave	4'	Fifteenth	2'	Choralbass (B-H)	4'
Open Flute	4'	Flute	4'	Flute (S-H)	2'	Mixture	
Twelfth	2 2/3'	Flute Twelfth	2 2/3'	Siffute	1'	Quintbass (S-H)	
Gamba (S)	8'	Wald Flute	2'	Sesquialtera (S-H)		Contra Trumpet	16'
Fifteenth	2'	Fifteenth (B)	2'	Mixture		Trumpet	8'
Cornet		Tierce	1 3/5'	Larigot (S)	1 1/3'	Clarion (S)	4'
Terzian (H)		Siffute (H)	1'	Cromorne	8'	Choir - Pedal	
Mixture		Mixture		Tremulant		Great - Pedal	
Trumpet	16'	Carillon (H)		Swell - Choir		Swell - Pedal	
Trumpet	8'	Fagotto	16'				
Tremulant		Oboe	8'				
Chamade		Trumpet (H)	8'				
Choir - Great		Vox Humana	8'				
Swell - Great		Tremulant					



Technical Specifications

Opus	C-280	C-380
Overview:		
System	OranjeCore+™	OranjeCore+™
Manuals	2	3
Voices	36	43
Solo stops	2	2
Couplers	3	6
Tremulants	2	3
Style-variable stoplist	•	•
Console:		
<i>Dimensions</i>		
Height (excluding music desk)	115 cm	122 cm
Height (including music desk)	139 cm	146 cm
Width	140 cm	140 cm
Depth (excluding pedal board)	63 cm	74 cm
Depth (including pedal board)	111 cm	118 cm
<i>Finish</i>		
Wood: Light oak	•	•
Wood: Other kind of wood or colour	optional	optional
<i>Music desk</i>		
Wooden desk	•	•
Plexiglas desk	optional	optional
Adjustable desk	optional	optional
Desk lighting	optional	optional
<i>Roll cover</i>		
Wooden roll cover with key lock	•	•
<i>Manuals</i>		
Synthetic keyboards (5 octaves)	•	•
Synthetic keyboards with wooden core	optional	optional
Wooden keyboards (ebony/oak) with wooden core	optional	optional
UHT wood handmade	optional	optional
<i>Swell shoes</i>		
Wooden swell shoes	2	2
<i>Toe Studs</i>		
Brass toe studs	optional	optional
<i>Pedalboard</i>		
32-note AGO pedal board with dark sharps	•	•
32-note AGO pedal board with plain sharps	optional	optional
Pedal lighting	optional	optional
<i>Bench</i>		
Bench	•	•
Bench with lift lid	optional	optional
Adjustable bench	optional	optional
<i>External connections</i>		
MIDI (IN, OUT)	•	•
Aux In	•	•
Aux Out	•	•
Headphones	•	•
Audio:		
Audio system	4.1	4.1
Audio control	DEA2.0™	DEA2.0™
<i>Reverb System</i>		
Convolution reverb, 12 unique reverbs	•	•

Opus	C-280	C-380
<i>Output amplifiers</i>		
Full-range amplifiers (180 Watt)	4	4
Bass amplifier (350 Watt)	1	1
<i>Sound reproduction</i>		
External loudspeakers	2 x UL 2800	2 x UL 2800
External subwoofer	1 x UL 3300	1 x UL 3300
Headphones / Aux Out	SSE2.0™	SSE2.0™
Functions:		
<i>Controllable functions</i>		
CAN (cancel)	•	•
REC (Recal)	•	•
MB (Manual Bass)	•	•
Menu (Johannus Menu)	•	•
RO (Reeds Off)	•	•
Trans. (Transposer)	•	•
Organ volume	•	•
Reverb volume	•	•
PL (Plenum)	•	•
Keyboard Transfer	-	•
<i>Intonations</i>		
Sample styles: Romantic, Symphonic, Baroque, Historic	•	•
<i>Setzer memory</i>		
Levels	125	125
Memory locations per level	8	8
Divisional memory locations per level	8	8
Presets programmable	T	PP-P-MF-F-FF-T + PL
<i>Johannus Menu Functions</i>		
Ambiance	•	•
Demo songs	6	6
Temperaments	11	11
Tuning (pitch)	•	•
Headphones / Aux	•	•
Bass / Brilliance	•	•
<i>Expression pedals</i>		
PEPC™ Programmable Expression Pedal Configuration	•	•
General Crescendo (through PEPC™)	•	•
<i>Miscellaneous</i>		
Dynamic bellows simulator	•	•
LiveTune™	•	•
Dynamic chiff	•	•
VPP™ (Virtual Pipe Positioning)	•	•
Headphone Equalizer	•	•
DEA2.0™ Digital Equalized Audio	All audio channels have a updated, advanced equalizer.	
SSE2.0™ Spatial Sound Experience	Special, updated and optimized, audio mix for headphone / aux-out. This gives the feeling that the organ is in front of you, while the reverberation also gives you the idea that you are in the room itself.	
VPP™ Virtual Pipe Positioning	Through this system it is possible to tell the organ where an organ pipe can be found.	
PEPC™ Programmable Expression Pedal Configuration	All expression pedals can be programmed as swell pedal or general crescendo.	

JOHANNUS

www.johannus.com

A MEMBER OF THE
Global Organ Group

Sound
of excellence